

Assembling DA-18(G)

Automatic drinker 18L, bucketmodel, with or without legs



Optional legs DA-18PN(G)



1



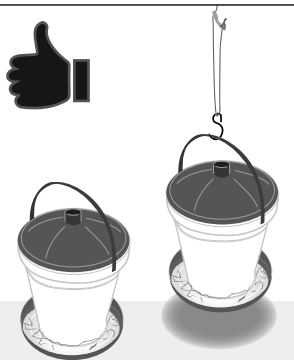
2



3



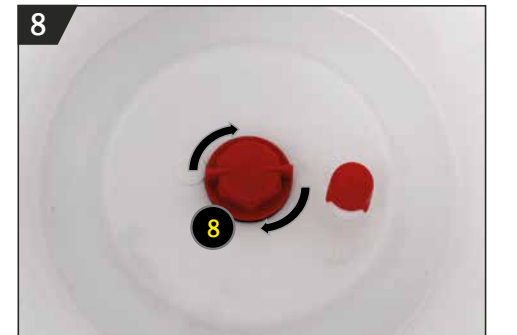
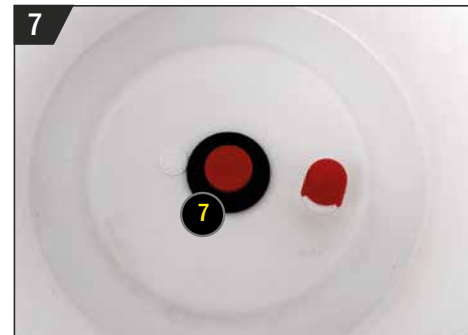
MAX. 18L



READY!
TO USE



Parts DA-18(G)





Automatic poultry drinker

Automatic drinker 18L, bucketmodel, with or without legs

EASY TO FILL WITH DRINKING WATER

AUTOMATIC WATER LEVEL CONTROL

OPTIONAL LEGS AVAILABLE



Optional: individually packing



Optional: leg set DA-18PN(G)



PRODUCT DETAILS

Art. code	Description	Size and weight	Packing
DA-18(G)	Automatic poultry drinker 18L (PPC)	60 x 17.5 x 16.5 cm 1870 g	37 x 37 x 96 cm / 16.8 kg 10 pcs / carton
DA-18PN(G)	Leg set (3) for DA-18	200 g	31 x 20 x 29 cm / 2.4 kg 10 sets / carton